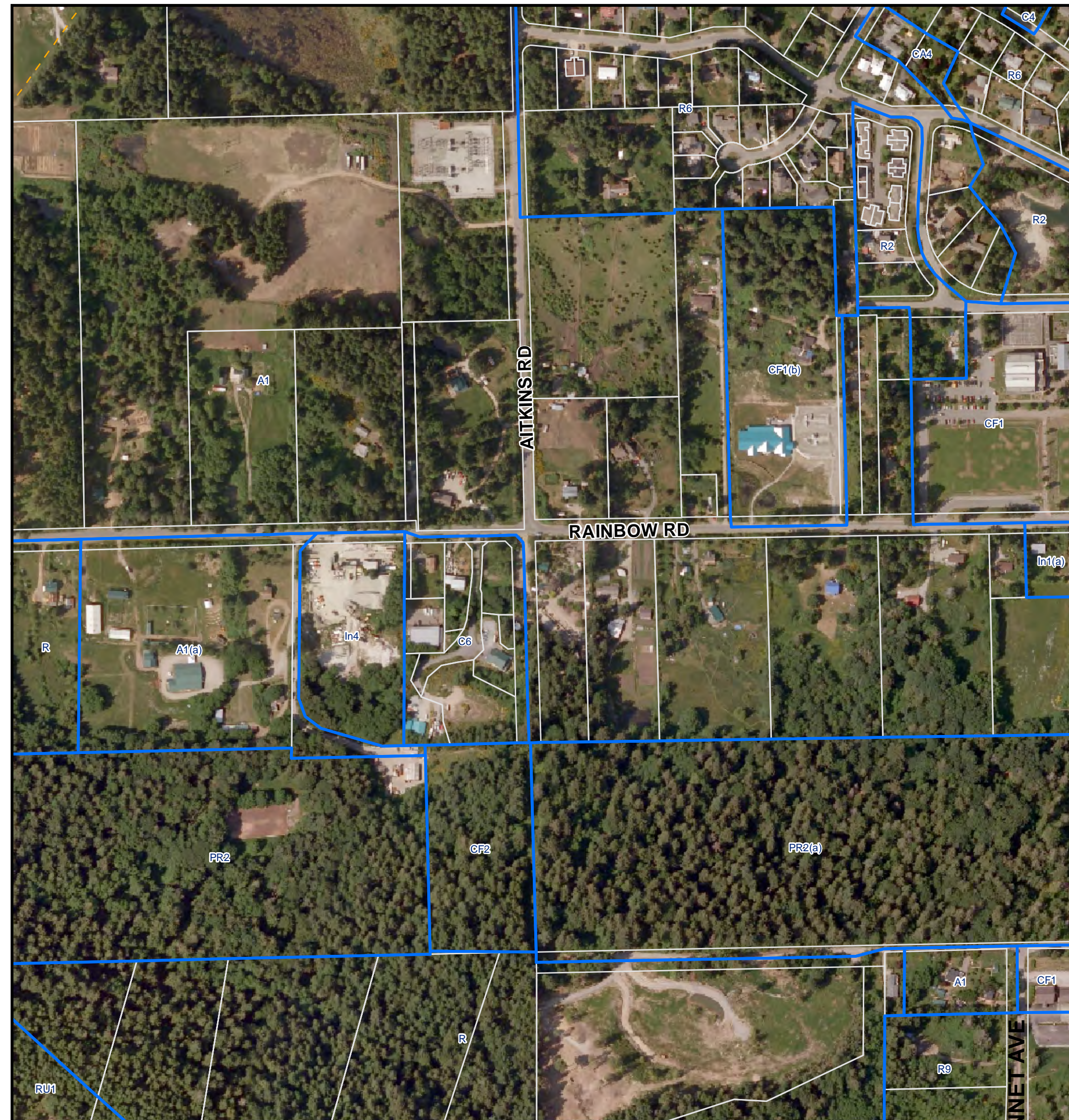


Salt Spring Island Land Use Bylaw Update 2010

Potential Areas for Additional Industrial Lands (Recommended by Industrial Task Force)

November 30, 2010

Junction of Aitkins Rd. & Rainbow Rd Area
(Also recommended in OCP)



Musgrave Rd. Gravel Pit Area



Junction of Robinson Rd. & Upper Ganges Rd

