

Conservation status of Gambier Island Local Trust Area

The Gambier Island Local Trust Area is one of 13 local trust areas and island municipalities that make up the Islands Trust Area. The Gambier Island Local Trust Area, located 10 km northwest of Horseshoe Bay near the Sunshine Coast, includes associated islands. It is within the traditional territories of numerous First Nations who have cared for these lands and waters since time immemorial.

The islands of the Gambier Island Local Trust Area are home to some of the rarest ecosystems in British Columbia, that are under threat from development, climate change and habitat

degradation. The Islands Trust Conservancy does “nature check-ups” to measure the state of island ecosystems to see how well we are meeting the Islands Trust’s mandate to “preserve and protect”. Guided by a science-based Regional Conservation Plan, our work is important because, like the species and habitats that support us, the quality of human life depends on ecosystem health. We all have a part to play in protecting these fragile islands in the Salish Sea for future generations.

Species at risk



Steller's Sea Lion (*Eumetopias jubatus*)

Blue listed (Provincially)



Red legged frog (*Rana aurora*)

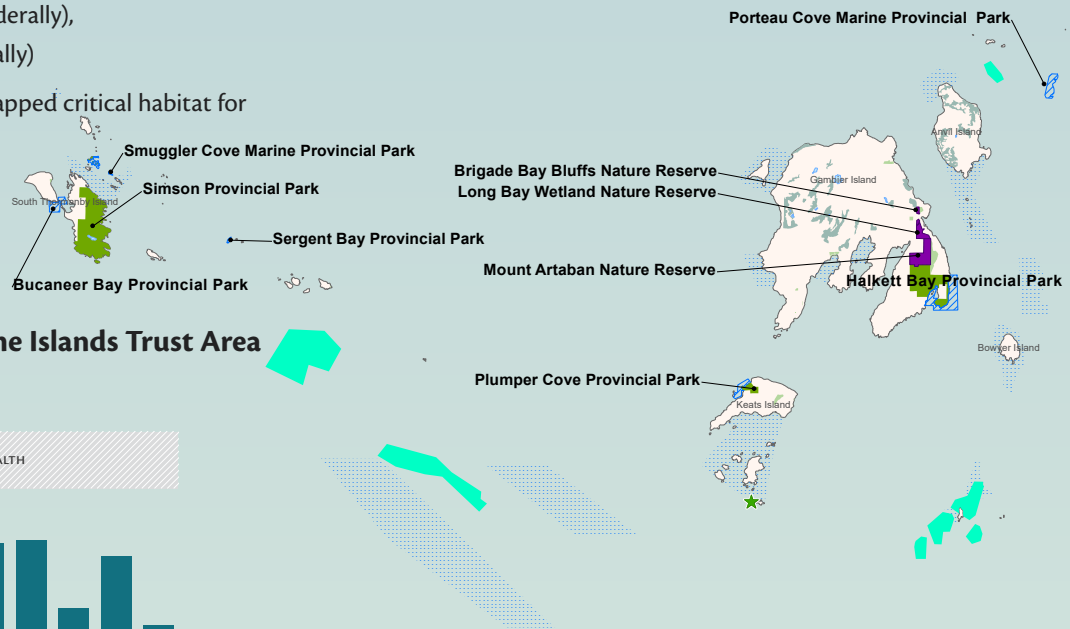
Special Concern (Federally),
blue listed (Provincially)

Gambier also has mapped critical habitat for
Marbled Murrelet

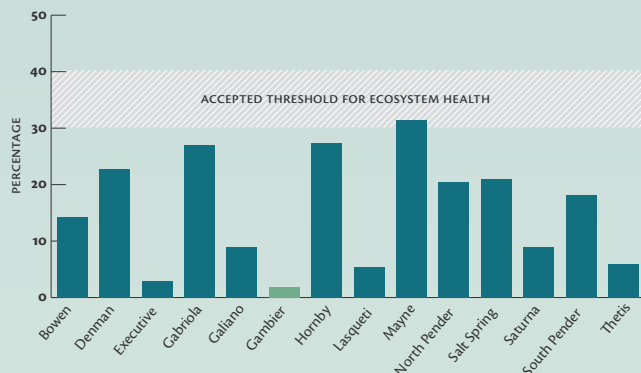


Parks & protected areas

16% PROTECTED



Land Converted to Human Use in the Islands Trust Area



Once land is converted for human use, that land is less available for nature. As land conversion reaches or goes above a 30-40% threshold, the number of species in a given habitat decline more rapidly.



Learn more at islandstrustconservancy.ca

How do forests help us?

CARBON EMISSIONS ABSORBED BY GAMBIER FORESTS ANNUALLY

EQUIVALENT CARBON EMISSIONS EMITTED BY PASSENGER VEHICLES ANNUALLY



=

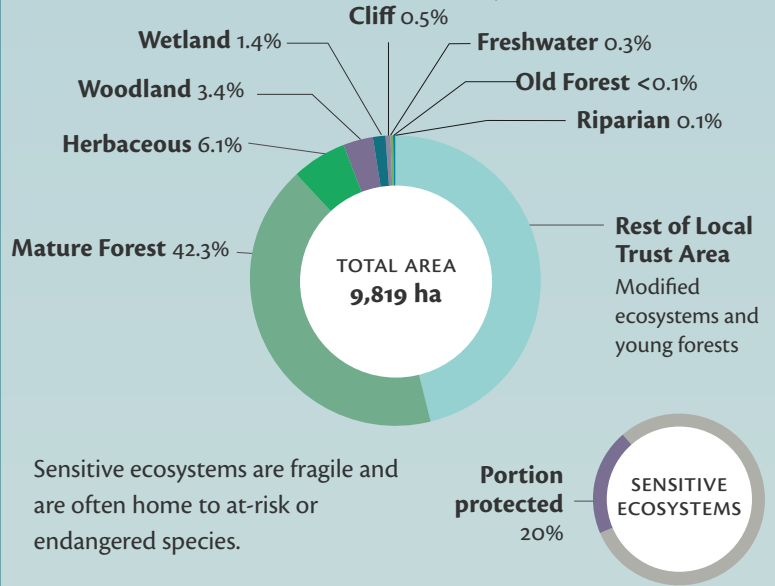


🌲 = 1,000 tonnes of carbon

🚗 = 500 vehicles

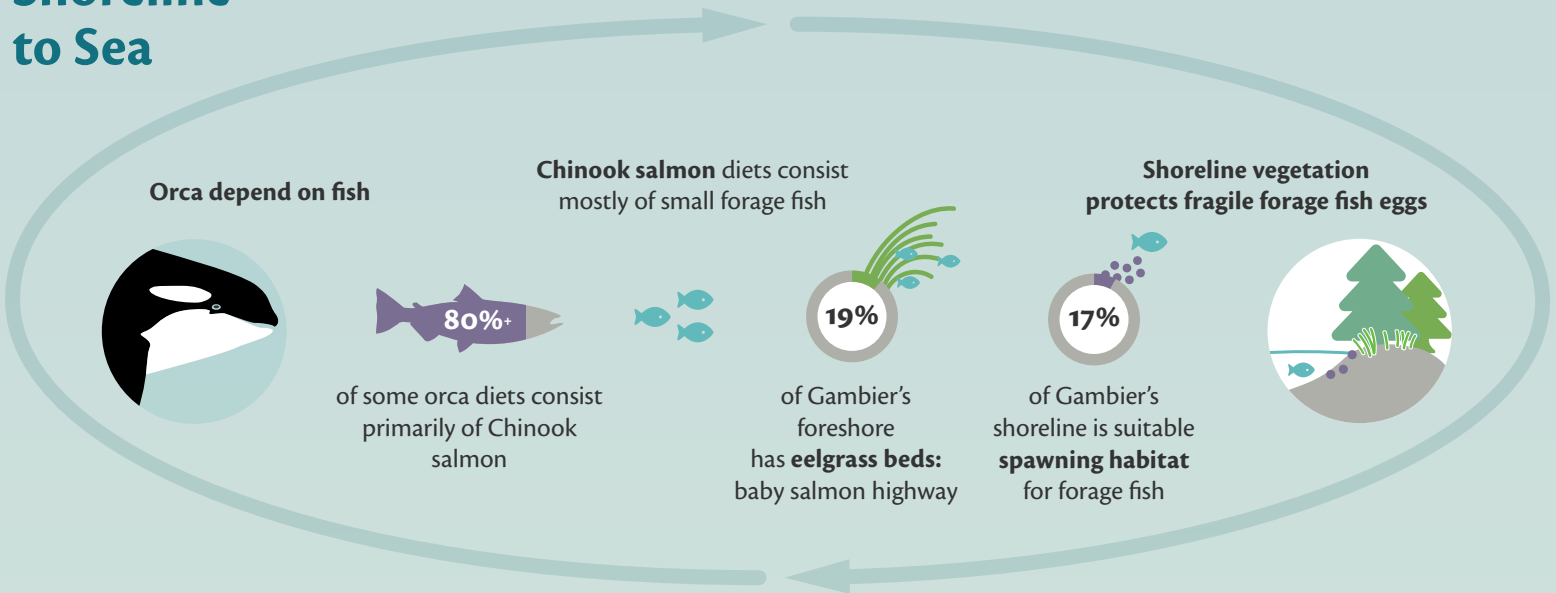
The forests on Gambier sequester 26,746 tonnes of carbon/year which equates to removing the emissions of 5,650 passenger vehicles per year. That's the equivalent of 23 cars/Gambier resident/year!

Sensitive ecosystems



Sensitive ecosystems are fragile and are often home to at-risk or endangered species.

Shoreline to Sea



Marine health starts at the shoreline. Your actions can make a difference!

Modified Ecosystems as of 2017

More than 65% of the Islands Trust Area is in private land ownership. Pressures to develop and change the natural landscape are tremendous. The Islands Trust Conservancy works with landowners to protect private land with conservation covenants, land donations, fundraising for nature, and stewardship.

